

NOW fasteners are designed for safety, it cannot be unfastened using traditional methods. It only works with its own driving bit in tightening direction.



Ensures maximum clamping security toward unauthorized people and malicious acts.



Special socket geometry transmits more torque and more power to the assembly parts through fastener.



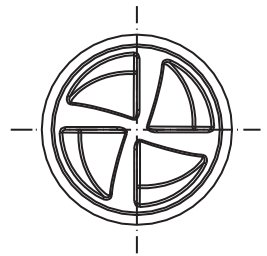
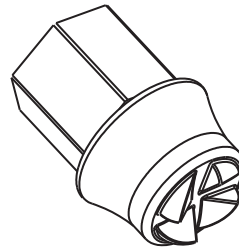
NORM One Way Fastener



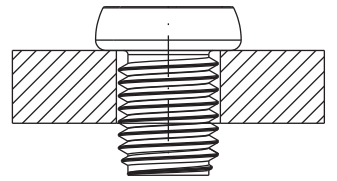
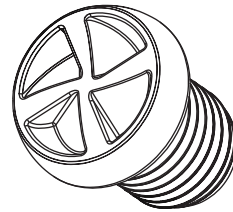
Wide side walls are optimized for transferring torque energy to the fastener body at maximum level.



Socket Shape can be easily applied to any kind of fasteners including different thread forms in the range of M8-M16.



Extensive Application Range: M8-M16



High Torque - Energy Transfer



Socket geometry is independent from the fastener type. NOW can be applied to almost every part serving superior safety features with its unique and patented form.

**for more information:**

10007 Sk. No: 1/1 A.O.S.B. Çiğli-İZMİR Turkey  
Phone: +90 232 376 76 10 Fax: +90 232 376 76 13

info@normcivata.com  
www.norm-fasteners.com.tr

# TEST and APPLICATION CENTER



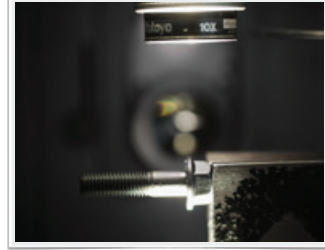
Perthometer



Profile Projection



Video Projection



Spectrometer



Mechanical & Statical Testers



Optical Microscopes



Stereo - zoom Microscopes



Molding, Cutting and Polishing Equipments



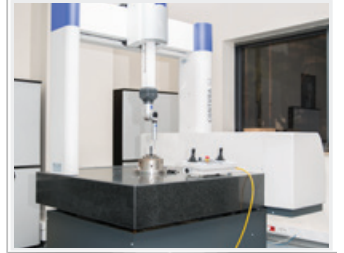
Thermal Camera



Hardness Measurement Testers



Coordinate Measuring Machine (CMM)



Fatigue Tester



Torque - Tension Tester



Bi - axial Vibration Tester

for more information:

10007 Sk. No: 1/1 A.O.S.B. Çiğli-İZMİR Turkey  
Phone: +90 232 376 76 10 Fax: +90 232 376 76 13

info@normcivata.com  
www.norm-fasteners.com.tr